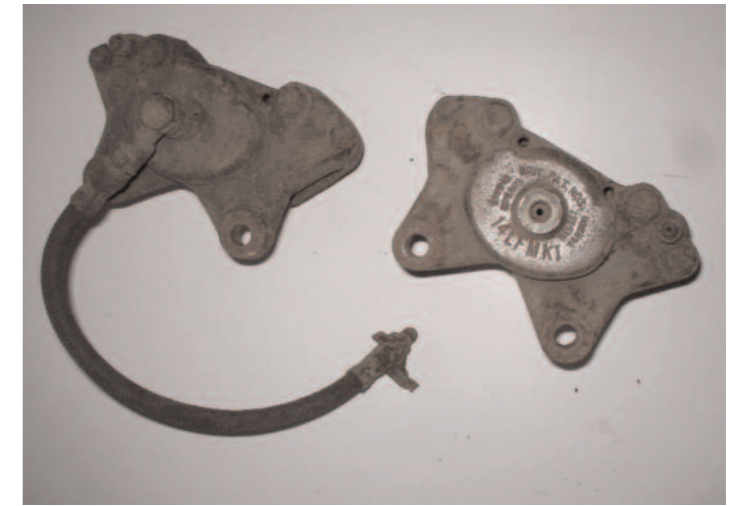




Pair of barely used Spyder adjustable front shocks and springs - plus 2 pairs of springs. £125



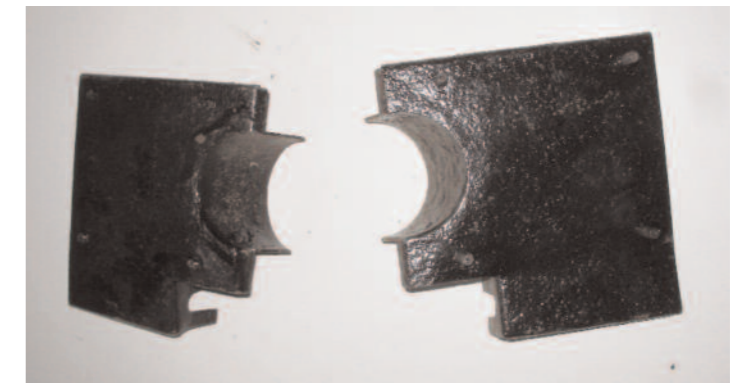
Original equipment Kenlowe fan and bracket £35



Pair of original equipment brake calipers £25



3 original equipment wishbones £15



Pair of original equipment rear brakeline brackets £15



Original Stromberg airbox £15 Original style fuel pump £15



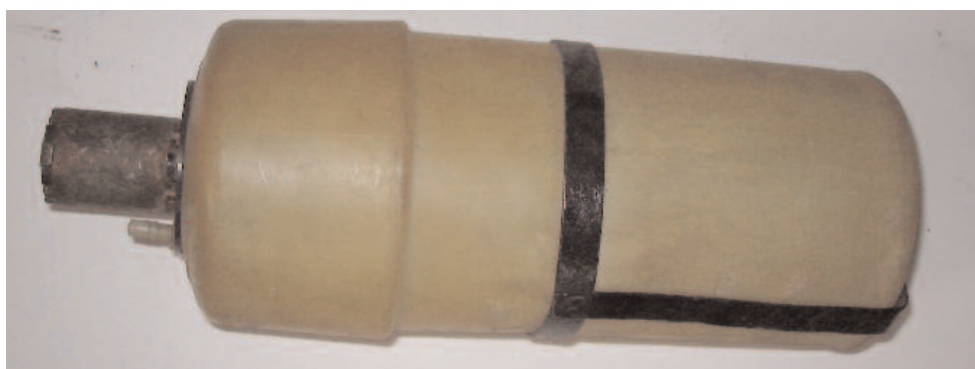
Assorted Stromberg carburettor parts £10



Anti roll bar links £10



Original equipment handbrake parts £15



Original style washer bottle £15



Pair of unused original Loto-cones £25

All these parts were left over/unused from the restoration in 1992 of a 1968 S4 Elan. Will take £325 (O.B.O.) for the lot. Parts are in South London

07976 426 682 or 0208 674 6354.

jules@vegasdesign.co.uk